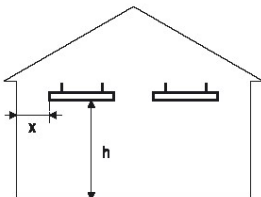
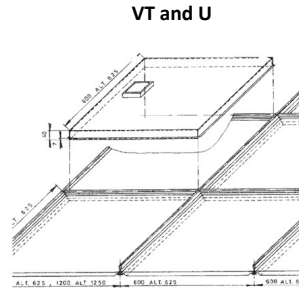
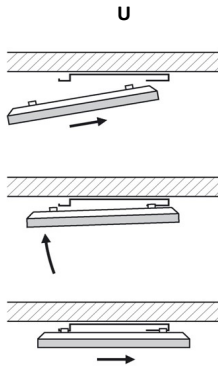


INSTRUCTION MANUAL

ECOSUN LOW TEMPERATURE RADIANT HEATING PANELS

Protection Class I., Voltage 230 V / 50 Hz

For ceiling installation only



MINIMUM DISTANCES*

300-600W	$h = 2,5\text{m}$	$x = 0,6\text{m}$
700W	$h \geq 2,7\text{m}$	$x = 1,2\text{m}$
850W	$h \geq 3\text{m}$	$x \geq 1,2\text{m}$
1000W	$h \geq 3,5\text{m}$	$x \geq 1,2\text{m}$

* Not applicable to industrial and agricultural applications. The distances must be observed

Warning

- Ambient temperature (i.e. temperature of air in the room where the radiator is situated) must not exceed 30 °C!
- Supply lead must be fitted with a disconnecting device and the distance of disconnected contacts must be at least 3 mm at each pole. Installation, electrical connection and the first commissioning is permitted to be performed by a worker with relevant qualifications.
- The supply lead cannot be replaced. If the lead is damaged, the appliance should be discarded.
- Use countersunk screws to install fixing frames.
- Type model number indicates input (300 = 300 W).
- Use gloves for handling not to pollute the front radiating panel surface.
- **Clean with water and detergent, using a small soft brush.**
- The panel must not be placed directly under an electric socket.
- This heater isn't fitted with a room temperature control device. Do not use this heater in small rooms if they are occupied by people who cannot leave the room by themselves unless permanent supervision is provided.
- This appliance can be used by children from the age of 8 and older, and persons with lower physical, sensory or mental abilities or a lack of experience or knowledge providing they are under supervision or have been trained in the use of the appliance in a safe manner and understand the possible danger. Children may not play with the appliance. Cleaning and maintenance by the user must not be carried out by children without supervision. Children under 3 years of age should be prevented from accessing the appliance, unless they are constantly supervised.
- **According to Commission Regulation (EU) 2015/1188 - Ecodesign requirements for local space heaters, this product is defined as space heater which must be regulated by a suitable external control device. The control device which is not part of the heating product must be equipped with electronic room temperature control plus week timer and at least one of the following control options:**
 - Room temperature control with open window detection
 - Distance control
 - Adaptive start control

WARNING – Some parts of this product may become very hot and cause burns. Special attention must be paid to this fact in the presence of children and handicapped persons.

INSTALLATION

Type: Ecosun 300U, 600U, 700U, 850U, 1000U

Use: Flats, offices, schools, hospitals, shops, industry and agricultural premises, etc.

Fixing: Preferentially, fix the panel in a horizontal position to a ceiling with a fixing frame or suspend it on chains or cables. The panels can be installed on flammable materials. The distance of front and side walls of the panel from flammable objects must be at least 10 cm. Panel dimensions are typified for inserting the panels in cassette lower ceilings

Installation: When mounting is carried out by means of a fixing frame, mark fixing points and fasten the frame with dowels to the ceiling or ceiling construction. Connect the supply lead to the network in accordance with colour marking of conductors. When putting the panel on the fixing frame, first push the panel partially (approx. 10 mm) on the rear shaped ends of frame girders and then incline the panel to the ceiling or ceiling construction so that the front catches may be pushed horizontally on the frame girders. When installing the panel on chains or cables, fix the chains or cables to four catches with \varnothing 6 mm holes by means of snap-hooks or similar fixtures.

Type: Ecosun 300 VT, 600 VT

Use: In cassette lower ceilings 600x600, 600x1200 (Thermatex, Rockfon, Armstrong).

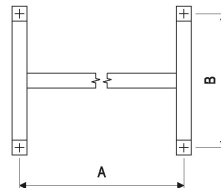
Installation: To a lower ceiling grid of respective dimensions. Connect to the box situated on the rear side of the panel.

Technical specifications

Type	Dimensions [mm]	Weight [kg]	Output [W]	Voltage [V]	Protection class	Coverage	Recommended installation height [m]
Ecosun 300 U	592x592x30	5,0	300	230	I	IP 44	min. 2,5
Ecosun 600 U	1192x592x30	10,1	600				min. 2,5
Ecosun 700 U	1192x592x30	10,5	700				min. 2,7
Ecosun 850 U	1192x800x30	17,5	850				min. 3
Ecosun 1000 U	1192x850x30	18,6	1000				min. 3,5
Ecosun 300 VT	574x574x35	4,6	300	230	I	IP 20	min. 2,5
Ecosun 600 VT	574x1174x35	9,4	600				min. 2,5

FIXING FRAME -

Platte	A (mm)	B(mm)
300U	340	280
600U, 700U	935	280
850U, 1000U		



Warranty conditions

The supplier provides a warranty of 5 years from date of sale for their product. The warranty does not cover faults caused by transportation, careless manipulation or non-professional installation. The warranty also does not apply in the case of a non-professional intervention into the panel or to everyday wear and tear on the product.

Date of sale:

Serial number:

Type of product:

Signature, Stamp